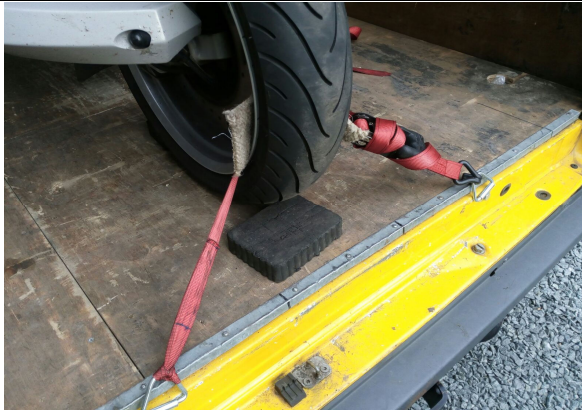


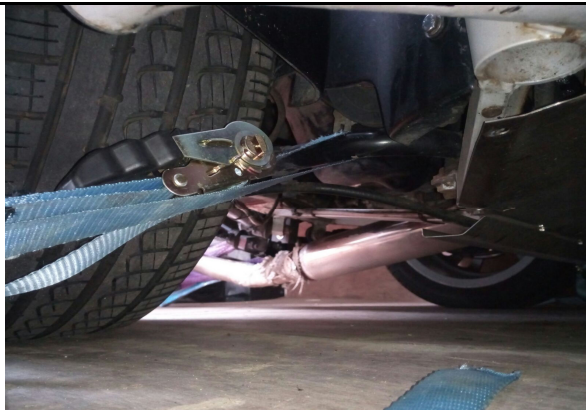
HOW TO SECURE A CARVER ONE FOR TRANSPORTATION



FRONT - strap through the front wheel, with padding (eg. carpet or thick fabric) to protect rim from damage



BACK - strap around the frame at the rear (where it is a V shape) and over the top of the pivot bar (do NOT strap around the track rods)



SIDES - strap around the anti-roll bar, to exit forward of the rear wheel and under the bullbar